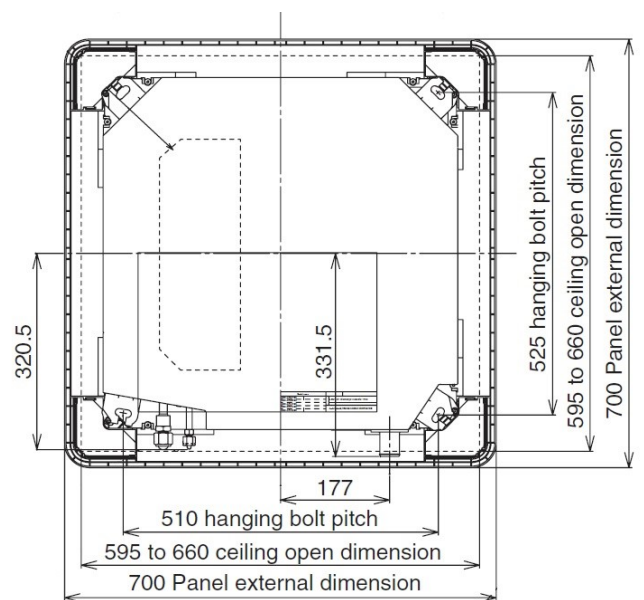
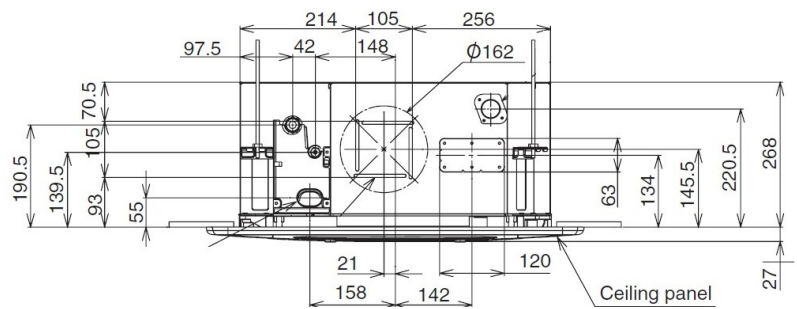


#### RAV-SM564MUT-E Compact Cassette

- R22 & R407C replacement technology
- Fits all standard 600 x 600mm ceiling grid
- Draught prevention, slim functions make this unit ideal for a large number of applications
- Built in condensate lift pump



Model Reference	RAV-SM564MUT-E	
Nominal Cooling	(kW)	5.0
Nominal Heating	(kW)	5.6
Annual Power Consumption (SM / SP *)	(kWh)	805 / 780
UK Cooling (SM / SP*)	(kW)	4.7 / 4.7
UK Sensible Cooling (SM / SP*)	(kW)	3.4 / 3.4
UK Heating (SM / SP*)	(kW)	4.53 / 5.18
Starting Current (SM / SP*)	(A)	1 / 1
Running Current (SM / SP*)	(A)	7.75 / 7.24
Suggested Fuse Size (SM / SP*)	(A)	16 / 16
Power Supply (V-ph-Hz)	220/240-1-50	
Interconnecting Cable	3 core plus earth	
Sound Power H-L	(dB(A))	58-49
Sound Pressure H-L	(dB(A))	43-34
Air Flow H-L	(m <sup>3</sup> /h)	798-546
Air Flow H-L	(l/s)	221-151
Dimensions (HxWxD)	(mm)	268 x 575 x 575
Unit Weight	(kg)	16
Energy Label Cool/Heat (SM / SP*)	A/A+ A/A	
EER / COP (SM / SP*)	3.11/3.48 3.21/3.64	
SEER / SCOP (SM / SP*)	5.48/4.16 5.61/4.20	
Pipe Sizes (Liquid / Suction)	(Inch)	1/4—1/2



Ceiling panel; RBC-UM11 PG (W) -E

\* Refers to outdoor combination SM= Digital Inverter / SP= Super Digital Inverter

## Cool Designs Ltd

Raising the Standards in Air Conditioning Distribution

www.cdlweb.info



All UK duties are based on Cooling Indoor air temperature 22°C DB/16°C WB Outdoor air temperature 28°C DB 50% RH, high fan speed, 5m pipe run.  
Heating Indoor air temperature 21°C DB Outdoor air temperature -4°C DB 100% RH, high fan speed, 5m pipe run. Values are based on the maximum compressor output.  
Data obtained from Toshiba Air Conditioning Web Data July 2013.